

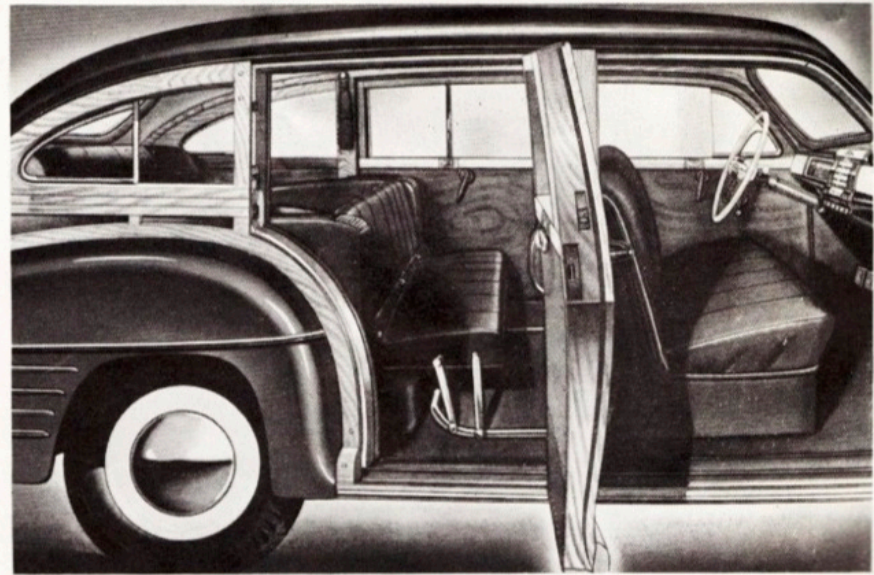
52

The Beautiful Chrysler

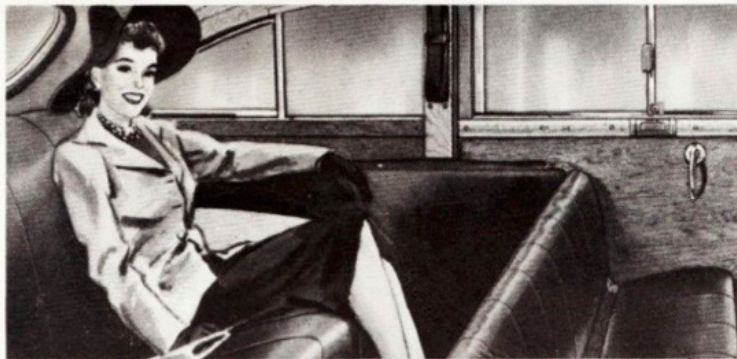
TOWN AND COUNTRY CAR



When the auxiliary seat is in position, nine passengers may be carried in comfort. Doors open wide for easy entrance and exit. The beautiful fittings—the passenger car comfort—at once stamp the Chrysler Town & Country Car as distinctive and unusual.



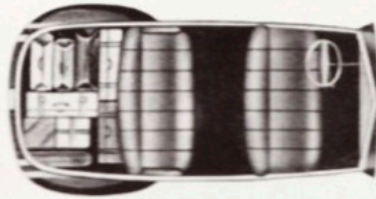
Smartly Styled ★ Sleek and Swift ★



The rear seat may be moved backward on a special pivot, if desired, permitting plenty of leg room when the auxiliary seat is raised. Rich wood paneling, with contrasting trim, gives the interior a swank note. Unique long armrests are always convenient, no matter whether the rear seat is forward or back.

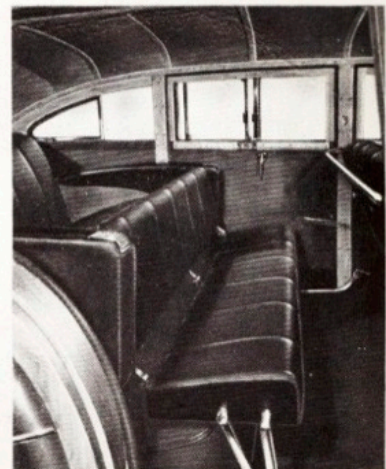
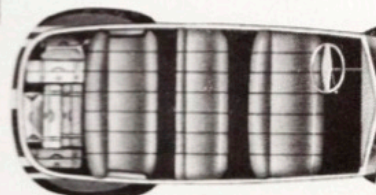


A specially designed luggage rack, which enables excess baggage to be carried on the roof, is available at extra cost. In addition to having a utilitarian purpose, the luggage rack adds a sophisticated touch.

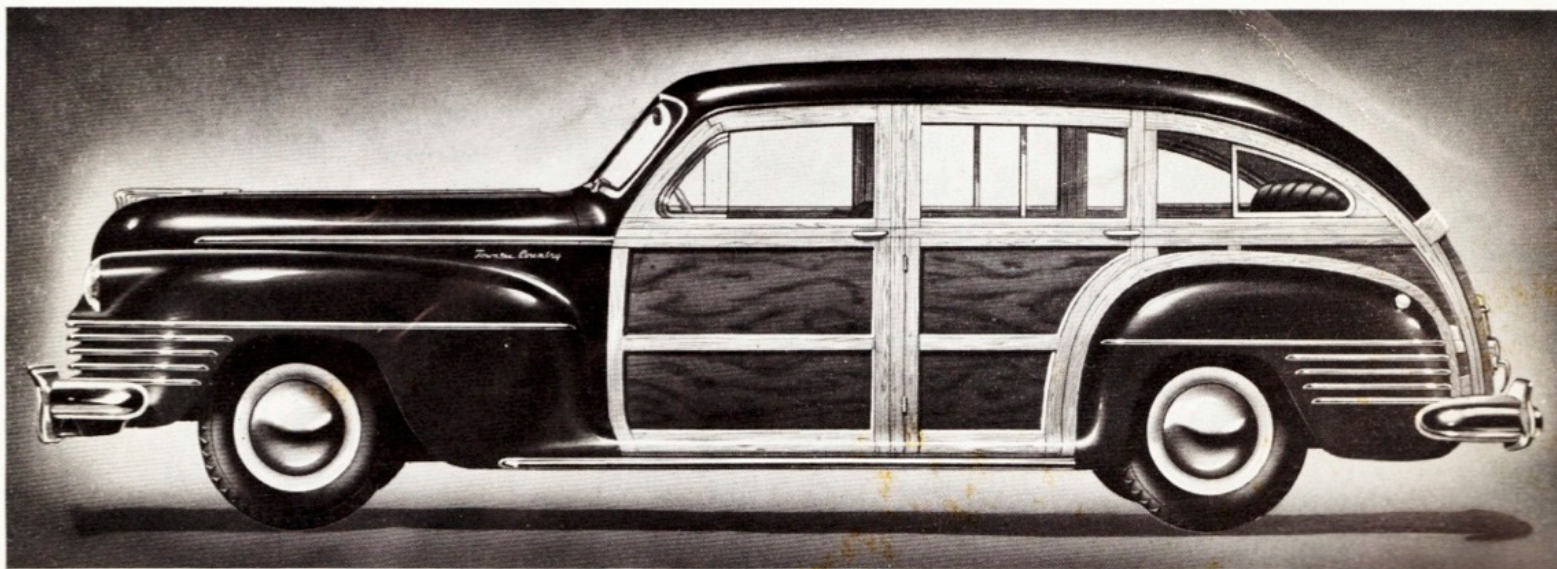


The Town & Country Car is available as either a six or a nine-passenger model. Pictured at the left is the six-passenger model with the rear seat in its forward position. The diagram above shows the seating arrangement and deep luggage compartment.

The six-passenger and nine-passenger models are identical, with the exception of the auxiliary seat, which opens up the full width of the car. Pictured below is the floor plan arrangement on the nine-passenger model, with the auxiliary seat raised.



★ All Steel Top ★ Six or Nine Passenger Comfort



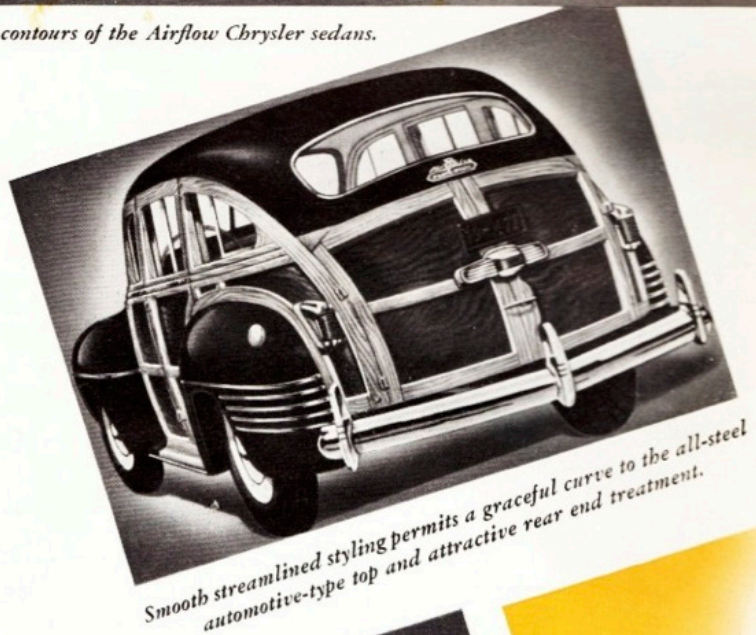
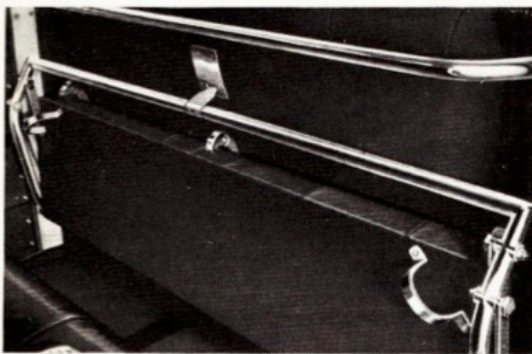
Perfectly streamlined, the body closely follows the graceful contours of the Airflow Chrysler sedans.

Sturdy and Safe ★



The Chrysler Town & Country Car is the only station wagon with an all-steel automotive-type top, providing additional safety, and an attractive streamlining which at once stamps the car as an aristocrat of the highway. Fluid Drive and Vacamatic Transmission are standard equipment, giving added smoothness, ease of handling, and performance advantages comparable with Chrysler's conventional passenger car lines. The Chrysler Town & Country Car is a sturdy, dependable station-goer . . . a car for informal occasions . . . roomy . . . comfortable . . . swift . . . designed for the discriminating owner who wishes exclusive, distinctive transportation.

The auxiliary seat which converts the model into a nine-passenger car may be folded up out of the way, against the back of the front seat.



Smooth streamlined styling permits a graceful curve to the all-steel automotive-type top and attractive rear end treatment.



Doors of the luggage compartment open outward, instead of upward, to permit easy access. The design does away with the tail-gate of conventional models.

rt ★ Fluid Drive and Vacamatic Transmission ★

Outstanding Features of Design and Engineering...

GENERAL DIMENSIONS—Wheelbase— $121\frac{1}{2}$ " ; $217\frac{3}{16}$ " overall length; 68" overall height; $75\frac{1}{16}$ " overall width.

HEADROOM—Interior, floor to ceiling, 49"; seat top to roof, front—39", auxiliary seat— $38\frac{1}{4}$ "; rear seat, rear position—35".

SEAT ADJUSTMENTS—Front seat—5"; rear seat—18" by means of pivoting hinge.

CUSHION DIMENSIONS—Front, width— $53\frac{1}{2}$ "; rear—width— $47\frac{1}{2}$ "; auxiliary seat, width— $50\frac{1}{2}$ ".

LUGGAGE COMPARTMENT—Door opening, top— $31\frac{3}{4}$ "; door opening, bottom— $39\frac{1}{2}$ "; depth, rear seat in forward position— $49\frac{1}{4}$ "; rear seat in rear position— $31\frac{1}{4}$ "; to back of front seat (if rear seat is removed)—86".

ENGINE—L-Head, 6-cylinder, 4-cycle, 120 H.P. at 3800 R.P.M. with 6.6 compression ratio. Bore— $3\frac{3}{16}$ "; stroke— $4\frac{1}{2}$ ". Piston displacement—250.6 Cu. In. Taxable horsepower—28.36. Floating Power Engine suspension, full pressure lubrication, Solar-Spark ignition, Automatic Spark advance, with vacuum control. Exhaust valve seat inserts. Ventilated clutch housing. Directional water cooling. Multiple-Jet Carburetor with automatic choke, manifold heat control and heavy-duty oil bath air cleaner and intake silencer.

TRANSMISSION—Fluid Drive and Vacamatic Transmission (semi-automatic).

FLOATING RIDE FEATURES—Aero-type hydraulic shock absorbers, sway eliminators front and rear; front wheels— independent coil springs; rear wheels—semi-elliptic grooved springs with tapered leaf ends, metal covered. Rubber insulated shackles and rubber pivot bushings. Hotchkiss Drive. Equal-pressure hydraulic wheel brakes and separate driveshaft parking brake.

TIRES—Size—6.50 x 16"; large hub cap. Whitewall Wheel Rings. Safeguard Rims.

STANDARD EQUIPMENT—Bumpers front and rear, with bumper buffer plates and bumper shields; twin two-speed electric windshield wipers; rear view mirror; two adjustable sun visors; triple tail lights with combination stop and rear license plate light; two dome lights; Sealed Beam head lights; parking lights integral with directional indicators; steering wheel gearshift lever; ash receiver in instrument panel and on each of rear side armrests; tools; five wheels with tires and tubes; cigar lighter; dual horns; glove box door lock; glove compartment light; dual directional signal lights; right and left door locks; electric clock; front seat, modified tubular type; plastic trim instrument panel and ornamentation; front compartment rubber mat; floor carpeting in rear compartment; leather upholstery; safety glass throughout; foot rest integral with front seat; door armrests on front doors; tube type robe rail; luggage net package holder behind rear seat; front door quarter windows—ventilating swing type; rear side door windows—two units, slide backward and forward; rear quarter windows—ventilating swing type; all-steel automotive type top.

INTERIOR TRIM OPTIONS—Red, tan, or green antique leather; red plaid and red leather combination*; maroon and ivory plastic weave with red leather combination*. Headlining in gray leatherette, with wood moulding strips.

EXTERIOR PAINT OPTIONS—Palace Brick Brown, Military Blue, St. Clair Blue, Newport Blue, Heather Green, Polo Green, Meadow Green, Dove Gray, Gunmetal Gray, Catalina Tan, Black, Regal Maroon. Body paneling—White ash and contrasting Honduras mahogany, natural finish, varnished.

** Available at extra cost. Specifications, prices, and equipment subject to change without notice.*